



SKINCARE

EXPERIENCE THE DIFFERENCE,  
A DIFFERENCE YOU'LL LOVE.





# THE RIMAN PHILOSOPHY

Premium, patented skincare products comprised of our sustainably sourced heritage ingredients to moisturize and rejuvenate your skin like never before.



## CLEANSE.

Unique cleansing system for a removal of impurities without stripping the skin.



## HYDRATE.

Hydrating and moisturizing products for intense skin restoration and nourishment.



## PROTECT.

Complexion products for a finishing dew with all-day skin protection.

80 g / 2.82 oz.

130 mL / 4.39 fl. oz.

Two Phase Oil Mist

# ICD

SKINCARE

## OUR SIGNATURE LINE FOR SKIN THAT GLOWS FROM THE INSIDE OUT

Premium, patented skincare products comprised of our sustainably sourced heritage ingredients designed to reveal your natural glow.

- Restores moisture & rejuvenates skin
- Soothes and protects skin from aggressors
- Visibly adds radiance for a youthful lift



# CLEANSER

Unique cleansing system for a removal of impurities without stripping the skin.

## MOISTURE CLEANSING OIL

DEEP, YET GENTLE CLEANSING THAT BRIGHTENS AND FIRMS WITH EVERY USE.

A cleansing oil that leaves skin clean, smooth, and radiant. The unique oil base delivers rich moisture without oversaturating the skin.

Remove Make-up | Loosen Dirt | Moisturize



### Black Cumin Seed Oil

Known as Cleopatra's beauty secret, this oil helps improve overall skin condition.



### Berryflux Vita

Active ingredients extracted from raspberry stem cells help increase moisture content and enhance skin elasticity.



### Jojoba Seed Oil

Enhances skin texture by thoroughly cleansing the skin and controlling excess oil from the sebaceous glands.

## HOW TO USE

### STEP 1

Apply 3 to 4 pumps onto your dry palm and massage gently over your entire dry face to dissolve makeup.

### STEP 2

Apply lukewarm water to your face and rub gently until the oil turns creamy.

### STEP 3

Rinse thoroughly with lukewarm water.

How to use with other **ICD SKINCARE** products:

Complete your double cleanse by following with our **Snow Enzyme Cleanser** or **Cleansing Powder Wash**.



# CLEANSE

Unique cleansing system for a removal of impurities without stripping the skin.

## SNOW ENZYME CLEANSER

UNIQUE, ENZYME-INFUSED CLEANSER CLEANS WITH SOFT, THICK, SNOW-LIKE FOAM, LEAVING YOUR CLEANEST, FRESHEST SKIN EVER.

Soft and gentle cleansing: Powerful enzymes deliver mild exfoliation that removes dead skin cells and impurities, leaving skin clear and infused with moisture.

Cleanse | Refresh | Purify



### Papain & Bromelain

Mild exfoliation to remove dead skin cells.



### Propolis Biosome

Derived from honey, this complex aids in elasticity, texture, and moisturization.



### Camellia Flower Extract

Delivers intense moisture and nutrients to maintain smooth, glowy skin.

## HOW TO USE

### STEP 1

Wet face. Apply a nickel-sized amount to hands and apply evenly over your face.

### STEP 2

Massage gently until the enzymes form a foamy texture. Add warm water to your hands and continue to massage gently until no residue is left behind.

### STEP 3

Rinse completely with lukewarm water.

How to use with other **ICD SKINCARE** products:

Use after the **Moisture Cleansing Oil** for that double-cleansing, clean skin feel.



Rich,  
Creamy  
Cleanser

# CLEANSER

Unique cleansing system for a removal of impurities without stripping the skin.

## CLEANSING POWDER WASH

**WATER-ACTIVATED, POWDER CLEANSER FOR SLOUGHING OFF DEAD SKIN CELLS TO BRIGHTEN AND RETEXTURIZE THE SKIN.**

A plant-derived, powder-based enzymatic cleanser that gently whisks away dead skin cells and impurities. Gentle acids help balance the skin and papain enzymes remove impurities – resulting in moisturized, healthy, energized skin.

**Exfoliate | Micro-Powder | Gently Cleanse**



### Papain

Exfoliates dead skin cells and impurities for smoother, brighter skin.



### Asparagus Stem Extract

Infuses the skin with balanced moisture.



### Oat Flour Extract

Helps condition the skin and aids in skin vitality.

## HOW TO USE

### STEP 1

Apply a nickel-sized amount onto your clean palm.

### STEP 2

Add lukewarm water and rub until powder melts into foam. Gently massage the enriched foam on the entire surface of your face.

### STEP 3

Rinse thoroughly with lukewarm water.

How to use with other **ICD SKINCARE** products:

Use after the **Moisture Cleansing Oil**, 2-3 times per week, for a more exfoliating double cleanse.



Water-Activated Powder Cleanser

# HYDRATE

Hydrating and moisturizing products for intense skin restoration.

## CALMING BALANCE GEL

A LIGHTWEIGHT, HYDRATING GEL TO SOOTHE AND REJUVINATE THE SKIN.

A water-based gel with Damask rose water and calming ingredients that restore skin balance, helping combat the effects of seasonal changes. Comforts and soothes while reducing redness.

Calming | pH Balance | Water Barrier



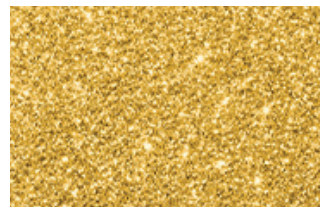
### Damask Rose Water

Contains vitamins and minerals designed to moisturize dry skin.



### 8-Layer Hyaluronic Acid

Composed of 8 types of low molecular weight, medium molecular weight, and high molecular weight hyaluronic acid to provide abundant hydration and elasticity.



### Gold

24k pure gold ingredients for enhanced absorption.

## HOW TO USE

### STEP 1

Apply a generous amount to your face and massage gently until gold flakes are melted into the skin.

### STEP 2

Re-apply additional layer when feeling extra dry.

How to use with other **ICD SKINCARE** products:

Mix with **Sheer Glow BB** for sheer coverage to create a naturally beautiful complexion.



Soothing Gel

# HYDRATE

Hydrating and moisturizing products for intense skin restoration.

## DERMATOLOGY FIRST PACKAGE

BOOSTER AND SERUM DUO FOR INTENSE HYDRATION AND SKIN NOURISHMENT.

This booster and serum work together to brighten the skin, restore strength, and improve elasticity that is lost over time, all while nourishing and protecting the skin.

Skin Conditioning | Hydration | Radiance



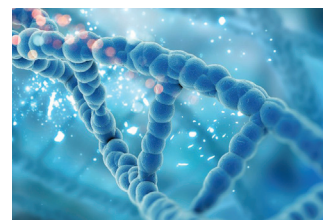
### BYoungPool (Centella Asiatica) Leaf Water

Highly effective in soothing and providing moisture to dry skin, all while providing antioxidant and skin rejuvenating benefits.



### NMN

A derivative of niacinamide and precursor to the formation of NAD+, NMN boasts powerful antioxidant care and improves the appearance of fine lines, wrinkles, and hyperpigmentation.



### Booster: Rejuvome-R

A unique enzyme known for its ability to support DNA repair, reducing the daily damages of overexposure to UV rays or pollution.



### Serum: Fillerstin™

Microbiome-focused extract for reducing the appearances of aging by supporting your skin's bacterial balance.

## HOW TO USE

### STEP 1

Spray Booster on your face; wait a few minutes to allow for absorption.

### STEP 2

Place droplets of Serum on your forehead and cheeks and massage gently into skin.

### STEP 3

Once serum has absorbed, spray Booster a second time for enhanced skin hydration.



How to use with other **ICD SKINCARE** products:

After you BooSeBoo, follow with **Dermatology Cream** for complete hydration.



# HYDRATE

Hydrating and moisturizing products for intense skin restoration.

## DERMATOLOGY CREAM

A RICH, FAST-ABSORBING FACE CREAM.

A unique, hypoallergenic hydrating cream that infuses moisture and nutrients deep into the skin, resulting in an unparalleled, glowing complexion.

Elasticity | pH Balance | Nourishment



### **BYoungPool (Centella Asiatica) Leaf Water**

Highly effective in soothing and providing moisture to dry skin, all while providing antioxidant and skin rejuvenating benefits.



### **NMN**

A derivative of niacinamide and precursor to the formation of NAD+, NMN boasts powerful antioxidant care and improves the appearance of fine lines, wrinkles, and hyperpigmentation.



### **Ergothioneine + Carnosine**

Thought to be a more powerful antioxidant than CoQ10, ergothioneine protects your endogenous antioxidants while also promoting direct benefits for reducing discoloration and redness. Carnosine, a naturally-occurring dipeptide, complements this activity.

## HOW TO USE

After you BooSeBoo, use provided spatula to apply **Dermatology Cream** to face. Massage in.



How to use with other **ICD SKINCARE** product:

Follow Dermatology Cream with **Aqua Protection Sunscreen** for ultimate skin protection.



Calming,  
Hydrating  
Moisturizer

# HYDRATE

Hydrating and moisturizing products for intense skin restoration.

## COLLAGEN 100 MELTING MASK

SPECIALIZED TREATMENT FOR DERMAL SUPPORT.

Fast absorbing, 100% collagen mask that melts into the face for bouncy, luminous skin.

Dermal Support | Moisturization | Plumping



New Zealand Collagen

High purity, type I marine-derived collagen in two forms: electrospun fibers that are 40x smaller than the human pore for maximum absorption, and hydrolyzed peptides for maximum moisture and structural support to the skin.



## HOW TO USE

Prep: After double cleansing, spray the **Two-Phase Oil Mist** over the face and allow to dry until skin is just slightly tacky (the mask needs something to adhere to).

### STEP 1

To apply mask, ensure hands are completely dry. Remove plastic backing and place pieces white side-down onto the face.

### STEP 2

Once pieces are adhered, remove beige application sheet.

### STEP 3

Liberal spray Dermatology Booster onto the face until collagen is thoroughly absorbed.

### STEP 4

Follow with Dermatology Serum and another spritz of the Booster. Massage in the **Dermatology Cream** to finish.

How to use with other **ICD SKINCARE** products:

Follow with **Aqua Protection Sunscreen** for ultimate skin protection.



100%  
Collagen!



# RADIANSOME™ 100

OUR MOST ADVANCED SKINCARE EVER

Our 100% Microfluidized nano-liposomes deliver natural ingredients and vitamin complexes for unparalleled:

- Hydration for maximum radiance and brightness
- Absorption for visible firmness and texture improvement
- Nutrition for strength and elasticity

# HYDRATE

Hydrating and moisturizing products for intense skin restoration.

## MICROFLUIDIZER ESSENTIAL TONER

**MILKY TONER WITH POWERFUL INGREDIENTS FOR MAXIMUM HYDRATION. PREPS SKIN FOR A BALANCED COMPLEXION.**

This essence provides rich moisture to freshly cleansed skin immediately, while over time revealing your most radiant, luminous skin. It tones and prepares your skin, allowing products to go on smoother and absorb better while creating a protective barrier.

**Moisturization | Brightening/Radiance | Skin Tone Enhancement**



**RK-SNOWFLAKE**  
[Exclusive]

For rejuvenated, healthier skin.



**VITA-COMPLEX**  
[Exclusive]

A 5-vitamin complex for glamorous, radiant skin.



**COLLAGENEER**  
[Patented]

For radiant elasticity.



**CentelLAC-GT**

Synergistic care for reducing the appearance of aged skin and Strengthening the skin's natural balance.



**Chronoglow**

Cellular protection from senescence and oxidation for more youthful looking skin.



**Ectoin**

Creates a protective "hydrofilm" on the skin, reinforcing the skin barrier and reducing skin texture and redness.

## HOW TO USE

After double cleansing and/or exfoliation with cleansing products, apply essence to your palm and gently pat all over your face until toner is fully absorbed.



**Essential Toner**



**Ampoule**



**Cream**

How to use with other **ICD SKINCARE** products:

Follow **Microfluidizer Essential Toner** with the **Microfluidizer Ampoule**.



PRESTIGE CARE SHINE THE MONIE

INCELLDERM

RADIANSOME™  
100

MICROFLUIDIZER  
ESSENTIAL TONER

Skin-Prepping Toner

# HYDRATE

Hydrating and moisturizing products for intense skin restoration.

## MICROFLUIDIZER AMPOULE

ULTRA-HYDRATING, FAST-ABSORBING LIPOSOME FORMULA FOR TARGETED CARE OF HYPERPIGMENTATION.

This concentrated formula delivers brightening ingredients to localized areas of hyperpigmentation for an all-over glow.

**Brightening/Radiance | Elasticity | Complexion Enhancement**



### RK-SNOWFLAKE [Exclusive]

For rejuvenated, healthier skin.



### VITA-COMPLEX [Exclusive]

A 5-vitamin complex for glamorous, radiant skin.



### COLLAGENEER [Patented]

For radiant elasticity.



### CentelLAC-GT

Synergistic care for reducing the appearance of aged skin and Strengthening the skin's natural balance.



### Stellight

Targeted activity on melanin formation to reduce dark spot creation.

## HOW TO USE

Use the dropper to apply ampoule directly to face and gently massage in.



Essential Toner



Ampoule



Cream

How to use with other **ICD SKINCARE** products:

Follow Brightening **Microfluidizer Ampoule** with **Microfluidizer Essential Toner**.



# HYDRATE

Hydrating and moisturizing products for intense skin restoration.

## MICROFLUIDIZER CREAM

RADIANCE MOISTURIZER FOR SUPPLE, BRIGHT, AND YOUTHFUL SKIN.

A moisturizing cream that delivers powerful, nutrient-rich ingredients for flawless, firm, healthy skin. This emollient, rich texture provides for a prolonged absorption of our Radiansome™100 ingredients for an all-day dose of radiance.

**Brightening/Radiance | Elasticity | Complexion Enhancement**



**RK-SNOWFLAKE**  
[Exclusive]

For rejuvenated, healthier skin.



**VITA-COMPLEX**  
[Exclusive]

A 5-vitamin complex for glamorous, radiant skin.



**COLLAGENEER**  
[Patented]

For radiant elasticity.



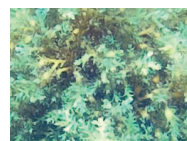
**CentellAC-GT**

Synergistic care for reducing the appearance of aged skin and Strengthening the skin's natural balance.



**Jeju Camellia Collagen**

Natural amino acids from the Camellia flower for skin moisturization.



**Cybright**

Powerful antioxidant with targeted activity to reduce the appearance of hyperpigmentation

## HOW TO USE

Apply a nickel-sized amount of cream to your face and massage into the skin.



Essential Toner



Ampoule



Cream

How to use with other **ICD SKINCARE** products:

Follow **Microfluidizer Cream** with **Aqua Protection Sunscreen** for ultimate skin protection.



# PROTECT

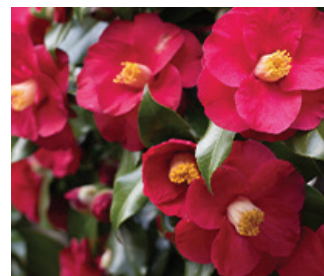
Complexion products for a finishing dew with all-day skin protection.

## TWO-PHASE OIL MIST

THE PERFECT GLOW-ENHANCING FACE MIST TO LOCK IN MOISTURE.

A rich, hydrating mist that combines the powerful moisture of oil with the nourishment of vitamins to provide radiant, dewy skin.

Protective Skin Layer | Lipid/Water Balance | Moisturization



### Camellia Seed Oil

Delivers intense moisture and nutrients to maintain smooth, glowy skin.



### Seaberry (Hippophae Rhamnoides) Water

Contains high levels of Vitamin C and E, which aid in skin vitality.

## HOW TO USE

### STEP 1

Before using, shake well to mix oil and water phases.

### STEP 2

Close your eyes, then spritz evenly all over face and wait for product to be absorbed.

How to use with other **ICD SKINCARE** products:

To amplify radiance and moisture, apply **Multi Stick Balm** before **Two-Phase Oil Mist**.



# PROTECT

Complexion products for a finishing dew with all-day skin protection.

## MULTI STICK BALM

A MOISTURIZING, ALL-OVER BALM FOR NOURISHMENT ON THE GO.

A multi-use, moisturizing stick balm that replenishes and creates firmer, more youthful-looking skin by eliminating the appearance of fine lines and wrinkles. Restore luster and shine on-the-go!

**Radiance | Calming | Hydration**



### **BYoungPool (Centella Asiatica) Oil**

Highly effective in soothing and providing moisture to dry skin, all while providing antioxidant and skin rejuvenating benefits.



### **Camellia Seed Oil**

Delivers intense moisture and nutrients to maintain smooth, glowy skin.



### **Seaberry (Hippophae Rhamnoides) Water**

Contains High levels of Vitamin C and E, which aid in skin vitality.

## HOW TO USE

- Glide onto areas where there is noticeable dryness.
- Re-apply whenever, wherever throughout the day to add moisture and a healthy glow to the skin.



How to use with other **ICD SKINCARE** products:

Follow up with the **Two-Phase Oil Mist**, which provides additional skin radiance compared to using the balm alone.



Multi-Use Balm

8.5 g / 0.29 oz.

# PROTECT

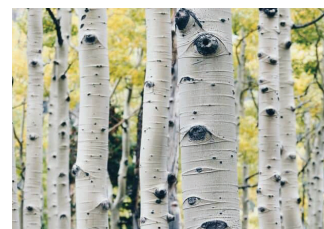
Complexion products for a finishing dew with all-day skin protection.

## AQUA PROTECTION SUNSCREEN

A LIGHTWEIGHT SUNSCREEN THAT PROTECTS FROM HARMFUL UVA/UVB RAYS WHILE GIVING YOUR SKIN A BOOST OF HYDRATION.

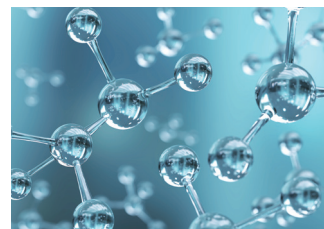
This moisturizing sunscreen provides Broad Spectrum (SPF 50+) protection against harmful UVA/UVB rays, all while infusing the skin with elasticity-enhancing and skin-brightening ingredients. Completed primary skin irritation testing and epioocular testing; no potential for skin or eye irritation.

**Moisturizing Protection | Mild & Hypoallergenic | Smooth, Replenishing Texture**



### Birch Sap

Provides rich moisturization to skin.



### 8-Layer Hyaluronic Acid

Composed of 8 types of low molecular weight, medium molecular weight, and high molecular weight hyaluronic acid to provide abundant hydration and elasticity.



### Lusiant Mela XD (Patent No. 10-176-4806)

Patented Lycopodium Clavatum Extract and Equisetum Arvense Extract to brighten skin and enhance elasticity.

## HOW TO USE

### STEP 1

30 minutes before sun exposure, apply evenly on the face, neck, and other body parts in need of UV protection.

### STEP 2

During prolonged sun exposure, apply every two hours.



Sunscreen

Sheer Glow BB

Luminous Glow Cushion

How to use with **ICD MAKEUP** products:

Combine with **Sheer Glow BB & Luminous Glow Cushion** for a protected, moisturized, and light coverage look.





CLEANSE

HYDRATE

PROTECT

WITH ICD SKINCARE  
YOUR ULTIMATE SKINCARE RITUAL